

COMPANY  
**Profile**  
CATALOGUE

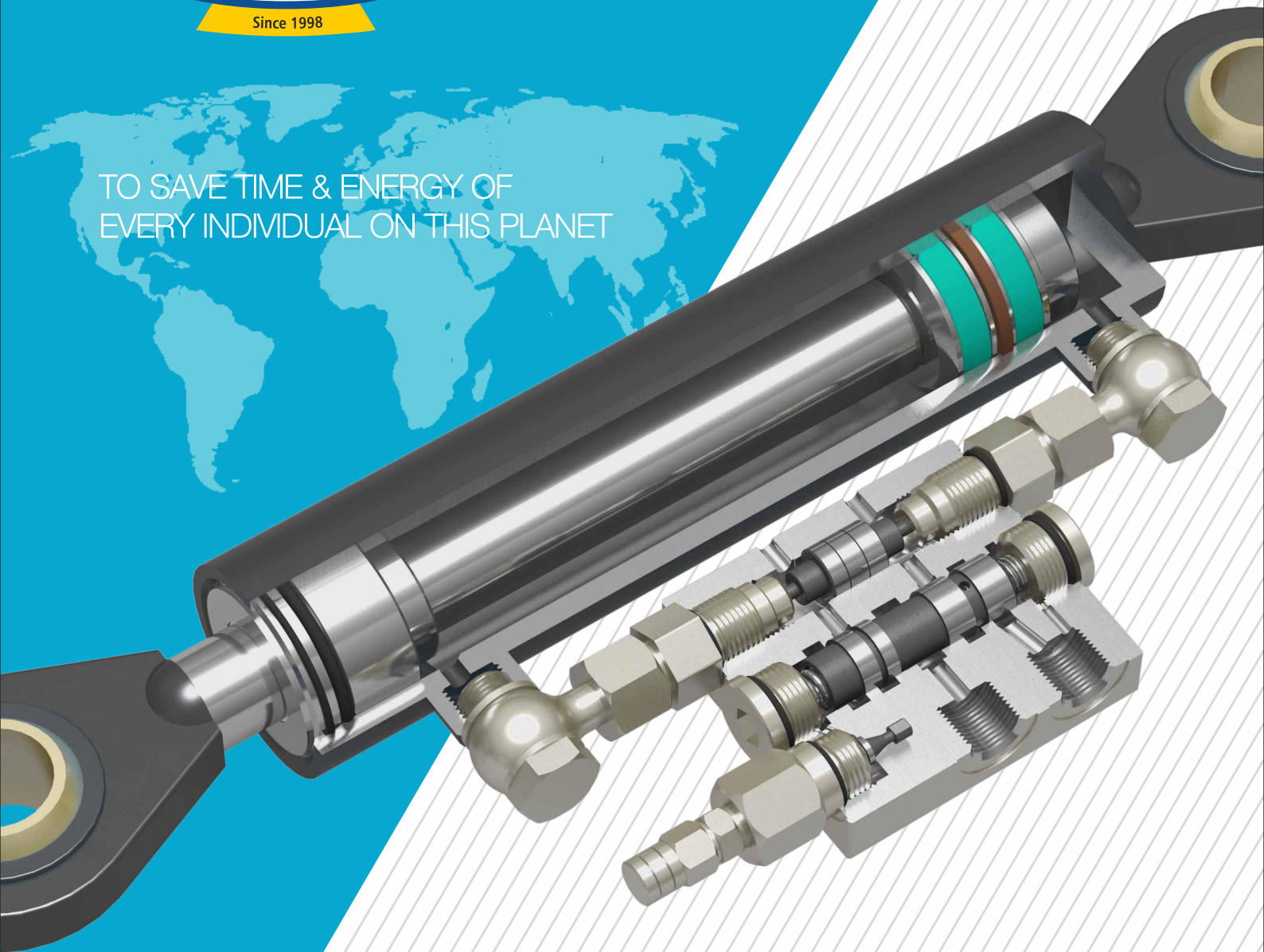


AN ISO 9001:2015 CERTIFIED COMPANY



Since 1998

TO SAVE TIME & ENERGY OF  
EVERY INDIVIDUAL ON THIS PLANET



**LORVEN** HYDRAULIC PVT. LTD.

# INTRODUCTION

Lorven Hydraulic Pvt. Ltd. is a leading manufacturer of hydraulic cylinders and valves. With over 25 years of experience in the industry, we have developed a reputation for delivering high-quality and reliable hydraulic solutions to our customers.

Our state-of-the-art manufacturing facility is equipped with the latest technology and machinery, allowing us to design, manufacture, and test a wide range of hydraulic cylinders and valves. We use only the highest quality materials and components in our products, ensuring their durability and longevity.

At Lorven, we understand that each customer's requirements are unique. That's why we offer customized solutions to meet their specific needs. Our team of experienced engineers and technicians work closely with customers to design and manufacture hydraulic systems that are tailored to their application.

We serve a variety of industries, such as automotive, construction, agriculture, material handling, and defense. Our hydraulic cylinders and valves are designed to perform in even the most demanding environments and applications.

At Lorven, we are committed to delivering exceptional customer service. We pride ourselves on our timely delivery, competitive pricing, and after-sales support. Our goal is to exceed our customers' expectations and build long-lasting relationships with them.

In summary, Lorven is a reputable manufacturer of hydraulic cylinders and valves. We offer customized solutions, high-quality products, and exceptional customer service. Contact us today to learn how we can help with your hydraulic needs.





TO SAVE TIME & ENERGY OF EVERY INDIVIDUAL ON THIS PLANET



**MR. PRAVIN KANERIYA**  
CHAIRMAN

*"To Make India globally proud by attaining leadership globally in all types of hydraulic solutions with the help of new technology, quality, and services, with integrity and stability."*



**MR. VASU KANERIYA**  
MANAGING DIRECTOR

*"To develop bench mark innovations and technologies to suit the changing requirements of the customers & the industry by continuous investments in updating our manufacturing & human resources."*



**MR. ATUL LADANI**  
PURCHASE DIRECTOR

*"Purchase the best quality raw material at a lower rate to provide the best economical and comparative rates to our Valued customers."*





# COMPANY JOURNEY

2023

Expanded our manufacturing plant to 4 acres of land at Khambha Rajkot

2022

Expanded our business area to the southern region of India to provide ease and fastest service to our valued customers in Bangalore Karnataka as a "LORVEN Hydromart".

2021

Started our new Rubber & Steel pipe unit "Lokian Engineering Co."

2020

Unit-3 for dispatch only in 4200 square feet.

2018

Started auxiliary valve kit for all tractor

2018

Separated unit-2 for cylinder manufacturing in 4000 square feet.

2016

Turned on the first OEM supply in TAFE with RMBV valve.

2015

Expanded with a further 9000 square feet.

2012

First VMC machine purchased

2010

The company relocated to a new space of 9000 square feet at Vavdi.

2010

Started turn over valve with hydraulic cylinder which is called plough turning cylinder.

2008

Started QRC manufacturing

2007

Turnover valve started for a hydraulic plough. We are the first Indian manufacturer who started over turning valve manufacturing

2006

First CNC machine purchased

2000

Started 3/3 dc valve for mini tractor for Rajkot local mini tractor manufacturer

1998

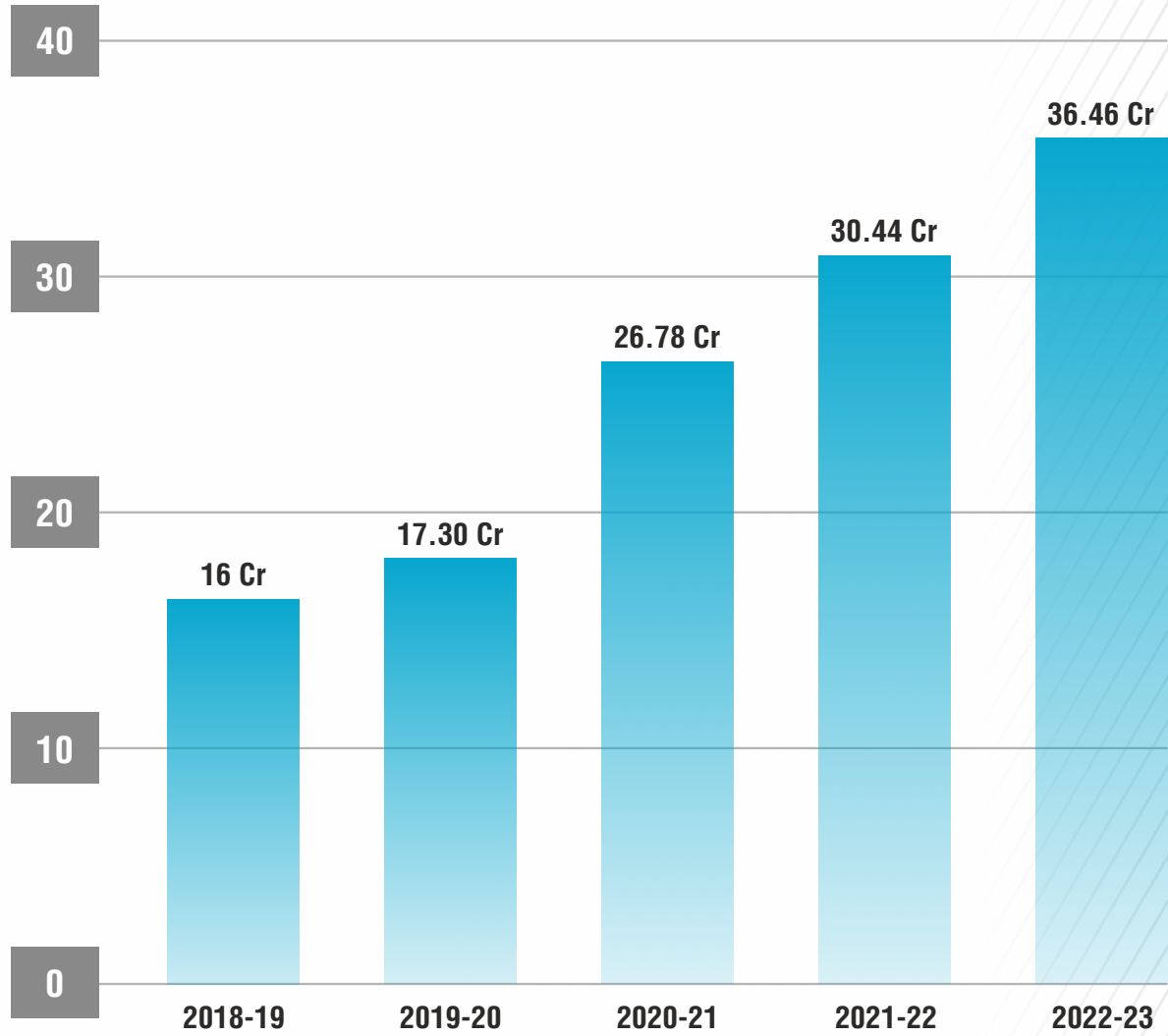
Company established with one lathe and drill machine in 550 square feet



# ANNUAL TURNOVER GROWTH CHART



Value in Cr.



## HYDRAULIC DIRECTIONAL CONTROL VALVE



4DL 10GS



4DL 10GS(T)



3K VALVE



3K VALVE WITH RELIEF



4DL 10GS ( T ) WITH RELIEF



LI60 SINGLE SPOOL  
MONOBLOCK VALVE



LI60 DOUBLE SPOOL  
MONOBLOCK VALVE



LI 60 THREE SPOOL  
MONO BLOCK VALVE



LH80S SECTIONAL VALVE  
1 TO 7 SPOOL



SINGLE SPOOL  
MONOBLOCK VALVE 40 Ltr.



BRAKE VALVE



DUEL ACTION SINGLE SPOOL  
MONOBLOCK VALVE 60 Ltr.



LI80S



LI 45 WITH  
SENSOR SWITCH



LH80W SECTIONAL VALVE  
1 TO 7 SPOOL



**QUALITY**  
 ....is everyone's  
 responsibility

## HYDRAULIC CYLINDER



PLOUGH TURNING CYLINDER  
(GE30 BEARING)



PLOUGH TURNING CYLINDER



PTC TOP LINK



DISC HARROW CYLINDER



GATE CYLINDER



TROLLEY CYLINDER



SINGLE ACTION CYLINDER



DOZZER CYLINDER



DOUBLE ACTION CYLINDER



STEERING HYDRAULIC CYLINDER

## QUICK RELEASE COUPLING



QRC

## SOLENOID VALVE



LH6 SINGLE ACTION



LH6 DOUBLE ACTION

## SPECIAL HYDRAULIC COMPONENTS



ROTARY VALVE



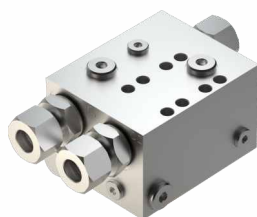
ROTARY PUMP



PMT VALVE



PRIORITY VALVE



COUNTER BALANCE VALVE



DOUBLE OVER CENTRE VALVE

# WE FOCUS ON ACHIEVEMENT



**36.46Cr+**

Annual Turnover

**20%**

Growth in this Financial Year  
2021-22

**45000+**

Plough turning cylinder  
sales highest in this year

**70000+**

Directional Control Valve  
sales highest in this year

**33000+**

Auxiliary Valve Kit  
sales highest in this year

**3000+**

Hydraulic Cylinder  
sales highest in this year

Next Target

**50Cr+**

Annual Turnover

## OUR MISSION

As we confidently tread into the third decade of a vibrant economy, we step into a set of new challenges. We have to face these with a fresh approach learning from our past experiences. Our dominant challenge remains how to produce more qualitative assemblies and components to feed our valued customers at an affordable price.





26

VMC CNC Machine

25+

Lathe + Drill machine

10

Grinding + Lapping Machine

6

Testing machine

6

Special Purpose Machine

4

Automatic Welding Machine

## LIST OF QUALITY LAB EQUIPMENT AVAILABLE WITH US

1	Mitutoyo CMM (CRYSTA-APEX V)	▶	1
2	Renishaw Equator	▶	1
3	ATQ VMM	▶	1
4	Hydraulic test RIG Machine	▶	2
5	Hydraulic performance Testing Machine (For External Leakage)	▶	2
6	Endurance Testing Machine ( For DCV and Plough Turning Cylinder)	▶	1
7	Roundness Tester (Mitutoyo)	▶	1
8	Roughness Tester (Mitutoyo)	▶	1
9	Mechanical Air Gauge Unit ( Baker Mod-1A)	▶	2
10	Digital Air Gauge Unit ( Baker –AEP 2045)	▶	1
11	Digital Height Gauge (Baker)	▶	2
12	Rockwell Hardness Tester	▶	1
13	2D Height Gauge –(Trimos V7 Series)	▶	1
14	Flow measuring Unit	▶	1

15 **Also all other required basic measuring instruments available in Qc lab like as:**

Digital Calipers, Digital Micrometers (Mitutoyo), Thread ring Gauges, Thread plug gauges, Inside caliper Gauges, Surface Table, Comparator Stand, Dial Caliper (0.02 mm ), Plain Plug Gauge, Snap Gauge, Concentricity Gauge.

# LORVEN GOALS BY 2023



## By 2030

“Lorven” will be Number One Company in Hydraulic products for Agriculture & industrial items in India & top Ten in the world.

## By 2030

Lorven will be providing various facilities to their employees like Employee township, school, hospital, indoor games stadium, gym, swimming pool, entertainment facilities.

## By 2030

Lorven will have it's own charitable trust which will be working for the welfare of society by sponsoring kid's education, by providing medical facilities, also by fulfilling the requirements of society as and when they arises.

## By 2030

Lorven will be supplying to Global OEM's like JCB, Kubota, New Holland, John Deere etc.

## By 2030

Lorven will be diversified in various businesses like Food industry, education, Agriculture, Real estate etc.

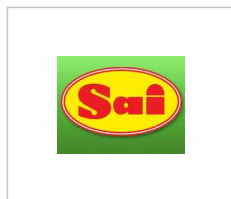
## By 2030

Lorven will be listed in the stock market of India and will give a stake to employees in the company by giving ESOPs.

By achieving all the above goals, Lorven will become a role model company globally.



# OUR PARTNERS IN SUCCESS



& MORE THEN  
**650+**  
 SATISFIED CUSTOMERS

AN ISO 9001:2015 CERTIFIED COMPANY



Since 1998



3DXDesignStudio

## LORVEN HYDRAULIC PVT. LTD.

SURVEY NO.718 & 720, RIBDA-LODHKA ROAD, AT. KHAMBHA,  
TA.LODHIKA, DIST. RAJKOT - 360311, (GUJARAT) INDIA  
E-MAIL : [INFO@LORVENHYDRAULIC.COM](mailto:INFO@LORVENHYDRAULIC.COM) | WEB : [WWW.LORVENHYDRAULIC.COM](http://WWW.LORVENHYDRAULIC.COM)  
CELL : +91 - 99138 44546